

ASSEMBLY INSTRUCTIONS



↑ Top

← Body of the desk in plan

↓ Base



1. Wrap the printed panel by making the velcro profile of the top and the base coincide to the ones applied to the back of the graphic panel.

NOTE

It's possible to accessorize DESK D with an optional crowner

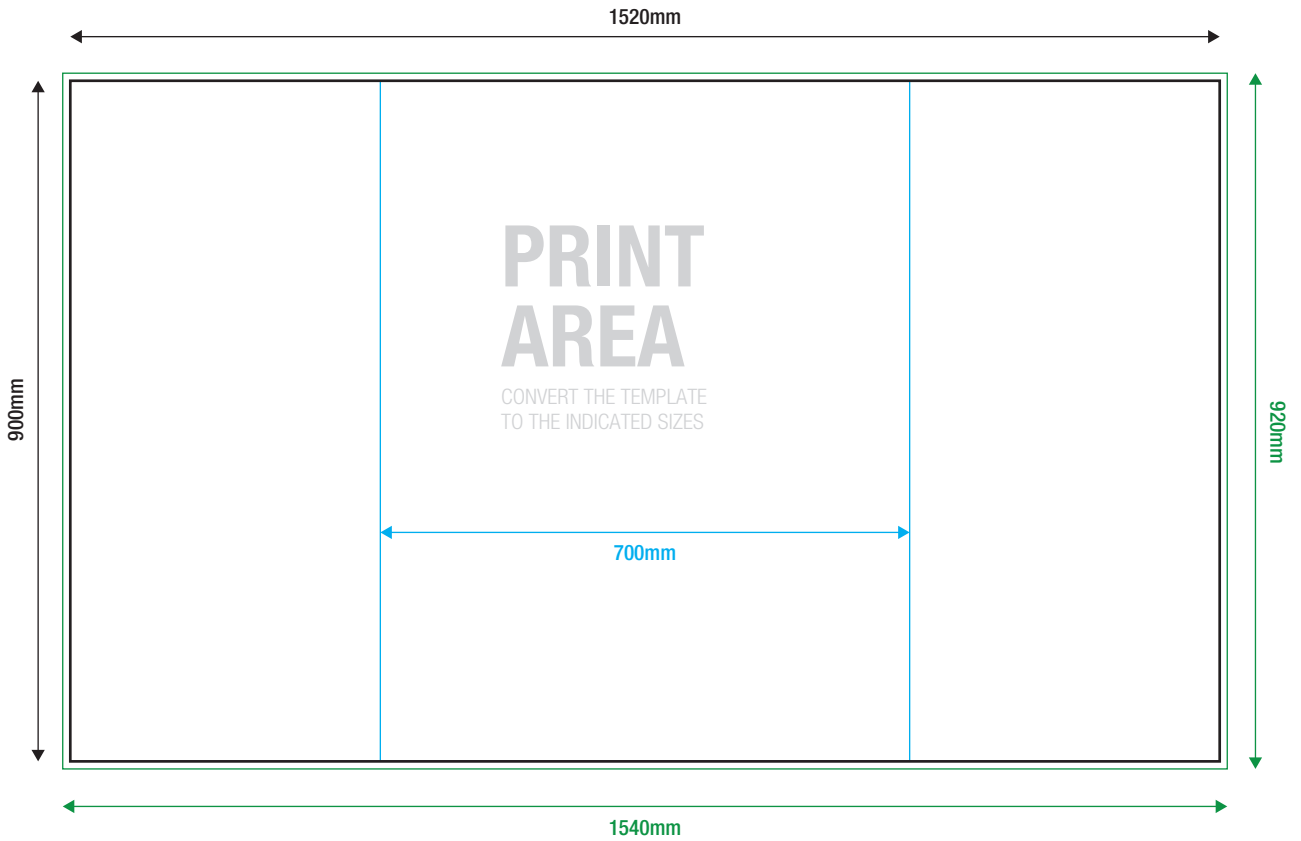


youtube.com/StudioStandsSrl
for assembly video tutorial

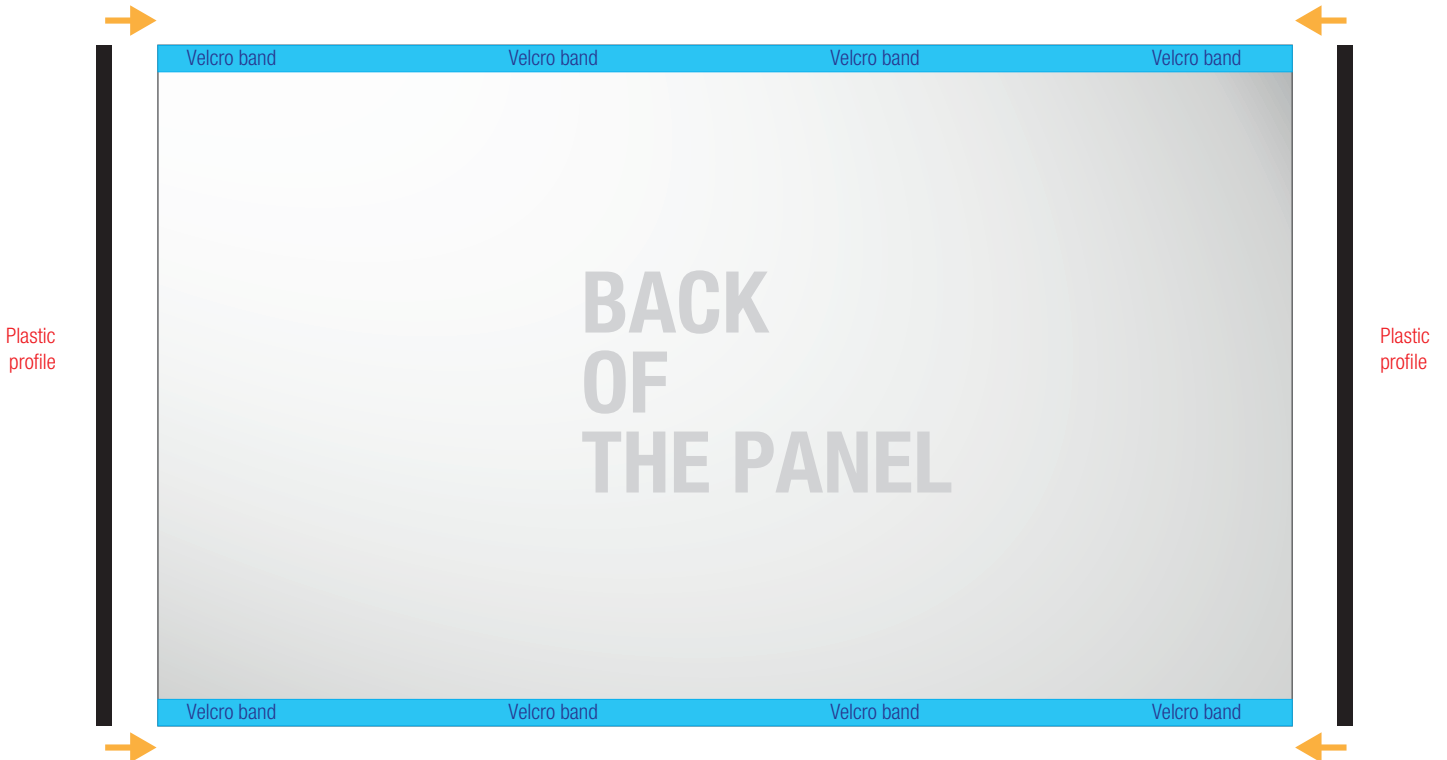
other SOLUTIONS / **DESK D**

STUDIOSTANDS.it
soluzioni espositive

DESK D (body) - white top version



INDICATIVE LAYOUT

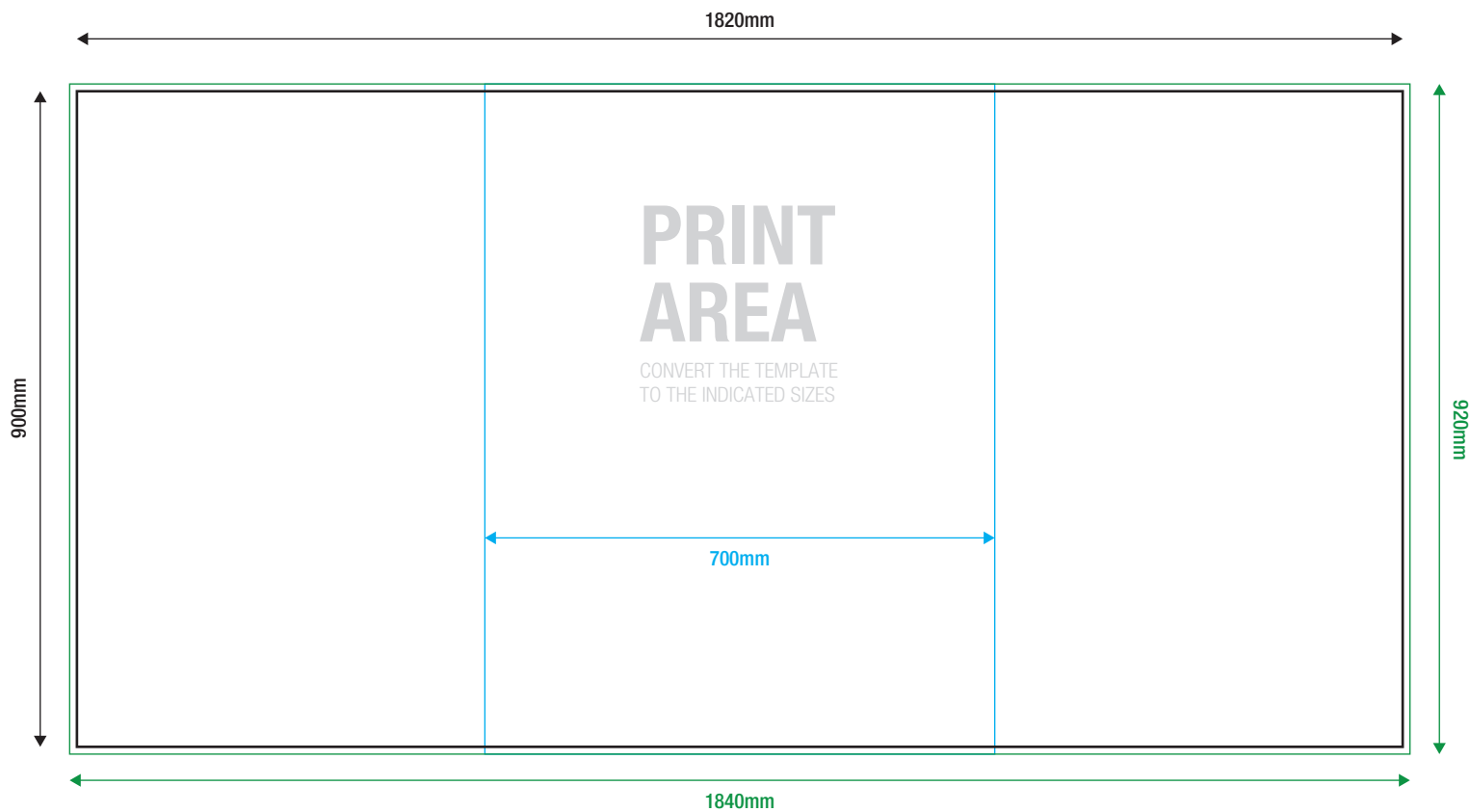


- BLEED**
- CUT LINE**
- SECURITY MARGIN**
(Do not position important content outside this margin)

INFO FILE

Formati: .eps .pdf .jpg .tiff
Color profile: CMYK
Immagini: 100dpi - 1000dpi (for 1:10 scale file)
Font: converted into vector outlines
Layout lines: only cut line (where present)

DESK D (body) - black top version

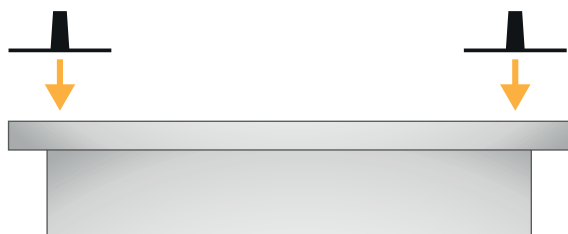
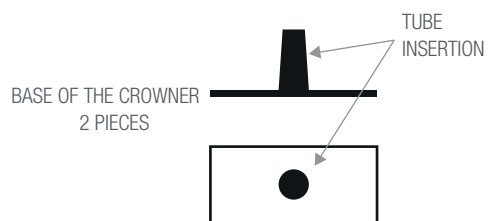


- BLEED**
- CUT LINE**
- SECURITY MARGIN**
(Do not position important content outside this margin)

INFO FILE

Formati: .eps .pdf .jpg .tiff
Color profile: CMYK
Immagini: 100dpi - 1000dpi (for 1:10 scale file)
Font: converted into vector outlines
Layout lines: only cut line (where present)

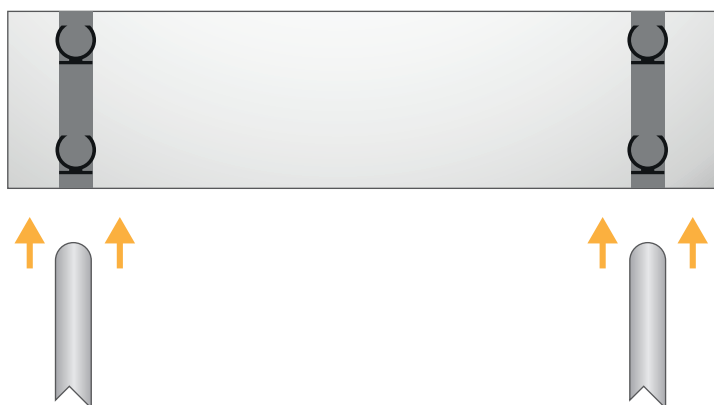
ASSEMBLY INSTRUCTIONS



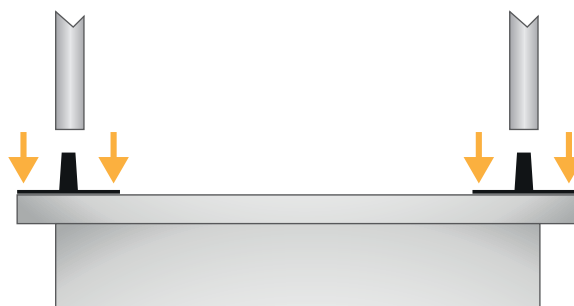
1. Secure the bases for the tubes insertion to the desk with double-sided tape



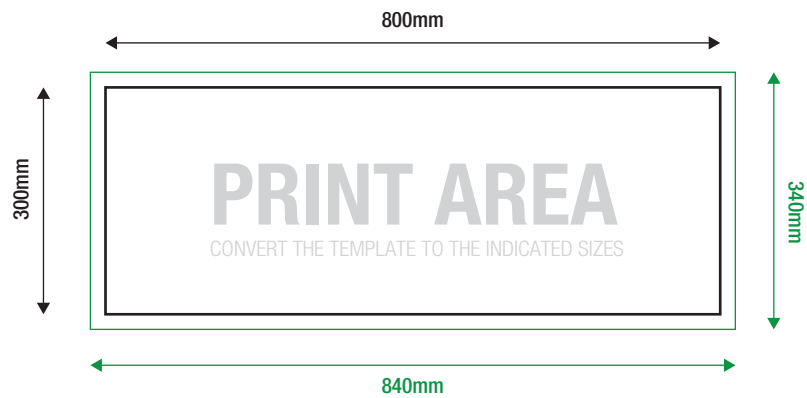
2. Apply the tubes attachment to the back of the Crowner with double sided tape and the self-threading screws provided.



3. Attach the tubes to the back of the Crowner.



4. Insert the tubes to the bases applied beforehand



- BLEED
- CUT LINE
- SECURITY MARGIN
(Do not position important content outside this margin)

INFO FILE

Formati: .eps .pdf .jpg .tiff
 Color profile: CMYK
 Immagini: 100dpi - 1000dpi (for 1:10 scale file)
 Font: converted into vector outlines
 Layout lines: only cut line (where present)

OTHER SOLUTIONS/ **CROWNER** (optional)

STUDIO STANDS.it
 soluzioni espositive